

# One+™ C Cell Model P4

## Product Data Sheet

UFS Corporation offers the **One+** C-Cell, a unitary-construction semi-circular Membrane Electrode (ME) Cell, designed to meet the needs of automotive E-coat paint systems. Its patented bonded-edge design eliminates flange nuts and bolts that are typical leak points. It has more electrode and membrane surface area than competitive c-cells. The **One+** C-Cell is an excellent choice when automotive assembly plant technical specifications are limited to semi-circular or box cell configurations.



## Properties

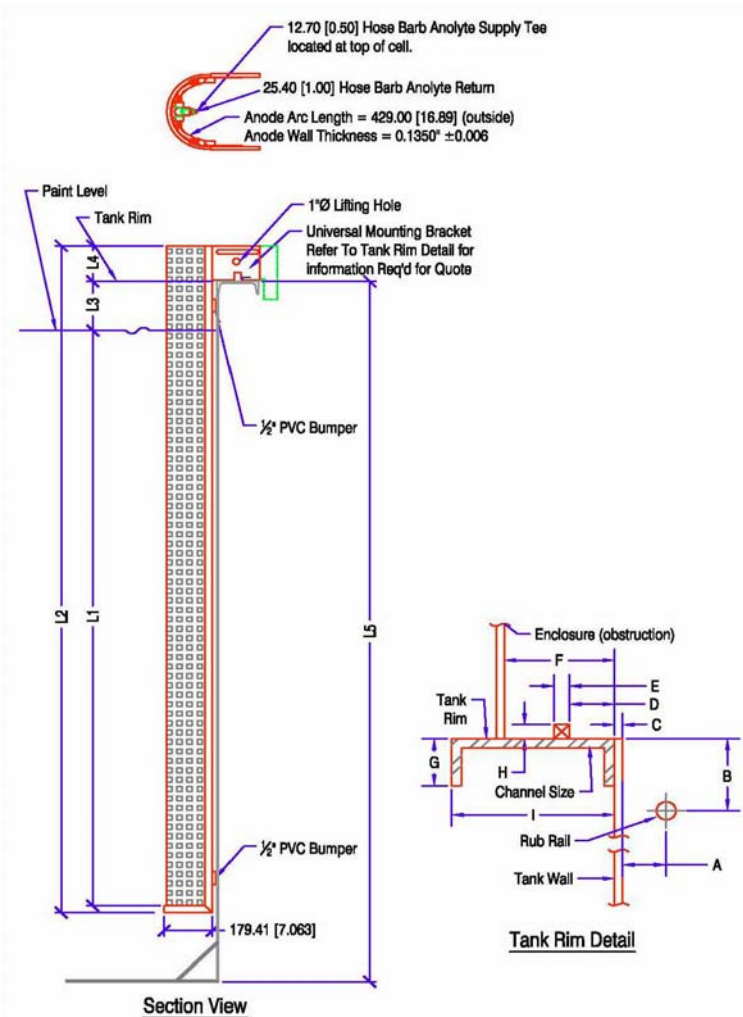
- The anode, membrane and guard are bonded together in a channel. This design eliminates leak points and creates a single, durable unit for easy start-ups.
- The anode is made from 316L stainless steel with a wall thickness of 3.4 mm (0.134 in), the same as competitive c-cells.
- Estimated dry weight per lineal unit is 14.2 kg/m (9.5 lbs/ft).
- The anode has 0.429 m<sup>2</sup>/m (1.407 ft<sup>2</sup>/ft) of surface area.
- The membrane is anion-selective for cathodic E-coat paint systems.
- Anolyte flows from a 1/2 inch connection to two internal inlets. One on each side of the anode provide enhanced anolyte flow over the surface of the anode. The Cell has a 1 inch NPT anolyte return connection.
- Anode current density of 32 - 54 amp/m<sup>2</sup> (3 - 5 amps/ft<sup>2</sup>) is typical at 200 - 400 volts.
- Recommended anolyte flow rate is 8 lpm/m<sup>2</sup> (about 2.0 gpm/10 ft<sup>2</sup>) per ME Cell at 3 - 3.5 bar (45 - 55 ft) of head.
- Rim bracket is a universal design and is adjustable to fit over the square bar typically welded to the rim of the E-coat tank.

This product is covered by U.S. Patents No. 7,422,673 and 7,897,021

**UFS Corporation . 330 North 400 East . Valparaiso, Indiana 46383 USA**  
**+219-464-2027 . +219-464-8646 (Fax) . [www.ufsc.com](http://www.ufsc.com) . [info@ufsc.com](mailto:info@ufsc.com)**

# One+ C-Cell

## One+ C Cell Proposal



Date:

Quote #:

Ref #:

### ME Cell Options List

#### Ion Exchange Membrane

- |                                 |                                       |
|---------------------------------|---------------------------------------|
| Type                            | Form                                  |
| <input type="checkbox"/> Anion  | <input type="checkbox"/> Roll (PTAR)  |
| <input type="checkbox"/> Cation | <input type="checkbox"/> Sheet (PTAN) |
|                                 | <input type="checkbox"/> Sheet (PTAC) |

- Electrode**
- P4 -316L SS Sch.5 (0.134 in thick)

**Effective Length (L1)**  
 80 inches

**Surface Area/One+ Cell**  
 0.871 SM  
 9.380 SF

Dimensional Values	
L1	
L2	
L3	
L4	
L5	
A	
B	
C	
D	
E	
F	
G	
H	
I	

- mm     inches

#### Recommended Accessories

- Flow Meter     Splash Guard  
 Cable Lead  
 PVC Return Tubing - 1.5 M (5 Ft) per Cell



UFS Corporation  
 330 North 400 East  
 Valparaiso, Indiana 46383 USA

Tel: (219) 464-2027  
 Fax: (219) 464-8646  
 Web: www.ufsc.com

**UFS Corporation . 330 North 400 East . Valparaiso, Indiana 46383 USA  
 +219-464-2027 . +219-464-8646 (Fax) . www.ufsc.com . info@ufsc.com**