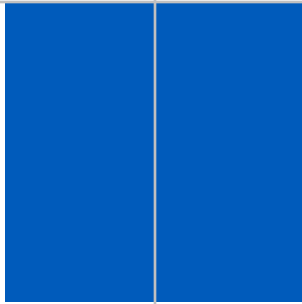


# TECTRON™ (ME) Cell Accessories

## PRODUCT DATA SHEET

UFS offers electrical, mechanical and plumbing accessories as part of our goal to easily install and efficiently operate our anode cell products.



**Copper Set Screw Lugs** connect Cable Leads to the bus bar, speeding up field electrical installation work.



**75 Amp Cable Leads** are used for small diameter ME Cells and for Roof Cells. They have a quick disconnect and are 150 cm ( 5 feet) long. One required per Cell. 120 Amp Cable Leads are used for large diameter ME Cells and for Floor Cells.



**Diodes** are used in multi-zone E-coat systems to prevent "reverse current" situations in lower current zones.



**Return Tubing** is clear PVC and connects the overflow nozzle of the ME Cell to the return manifold. One meter (3 feet) is standard per Cell.



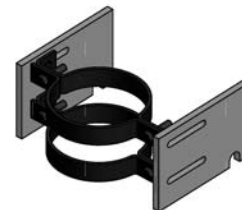
**Flow Indicator/valve** displays proper flow ranges for each TECTRON Cell, and is installed on the supply tubing at the supply manifold. One required per Cell.



**Splash Guards** are placed on top of small diameter open top ME Cells to prevent paint drips or spray from entering the ME Cell. One required per Cell.

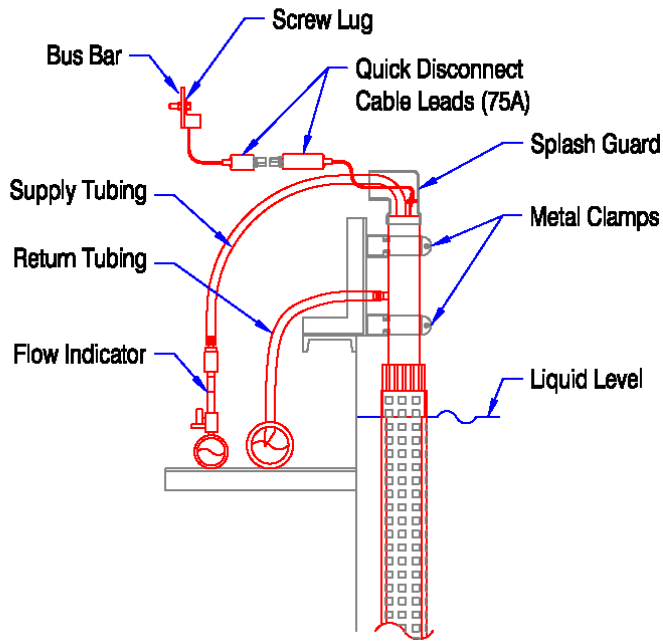


**Clamps** are two-piece, electro-galvanized metal and are used to attach small diameter ME Cells to the strut channel. Two required per Cell.

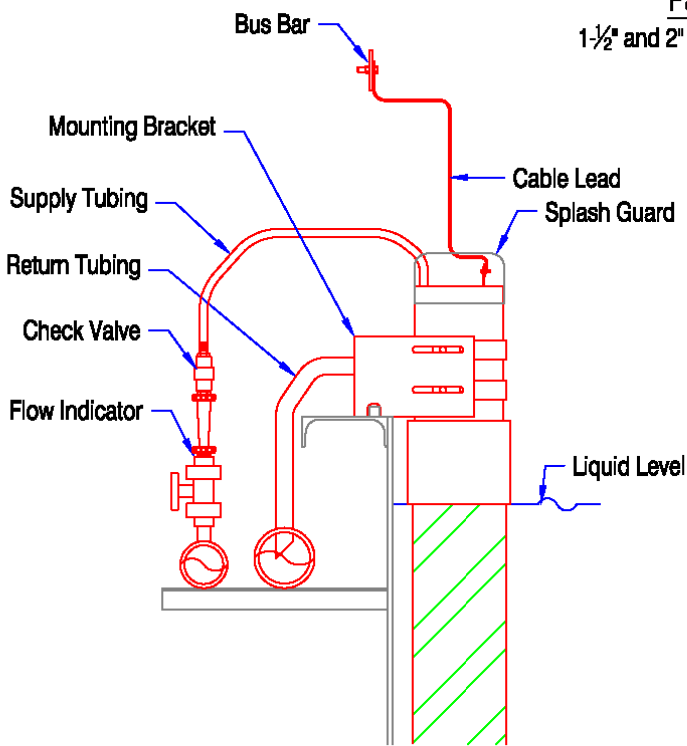


**Universal Mounting Brackets** are used to attach large diameter ME Cells to the tank rim. They are easily field adjusted to ensure tight fit. One required per Cell.

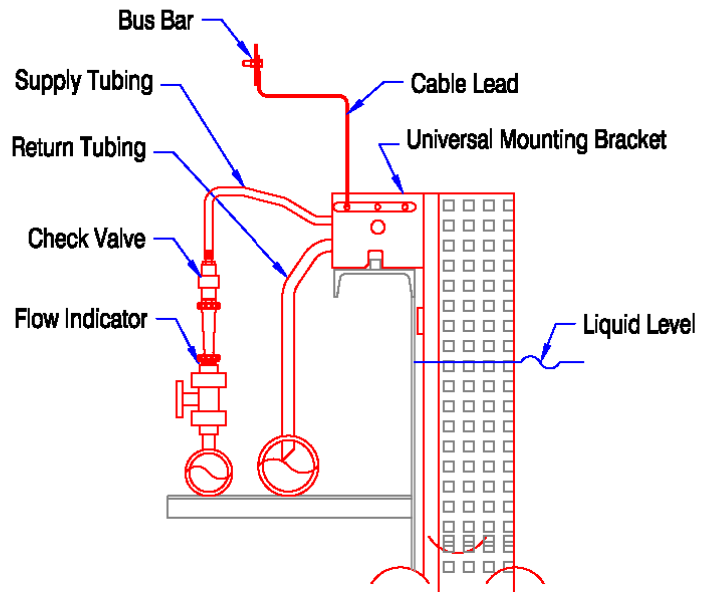
**UFS Corporation . 330 North 400 East . Valparaiso, Indiana 46383 USA**  
**+219-464-2027 . +219-464-8646 (Fax) . www.ufsc.com . info@ufsc.com**



**Partial Side View**  
1-½" and 2" ME Cell Typical Accessories



**Partial Side View**  
5" ME Cell Typical Accessories



**Partial Side View**  
One+ C-Cell Typical Accessories