

Installation Reference

Topic: PN 721001

Please read all the instructions listed below to familiarize yourself with the project before attempting to perform any of the work or unpacking any further.

Required Materials

- None

Required Tools

- ½" Wrenches (2)
- Pipe Wrenches (2)
- Teflon Tape

1. Carefully remove the Electrodes from the crate. Thoroughly inspect the Electrodes and report any defects immediately to UFS Corporation. Be careful when handling the electrodes. Do not scratch or mishandle.
1. Make sure UFSc PN 090001 is on the Electrode before bolting together. (See Figure 1)
1. Slip 2" gasket over 2" PVC pipe as shown. Slip the coupling body over the nut and bolt connection to where coupling sits, which is approximately at the center of the two pipes being connected.
1. After hooking up UFSc PN 095002, connect the other end of the electrical cable of the Electrode to the bus bar.
2. The floor support location in the ED tank should be positioned at or around the center of the end of the caps and couplings.

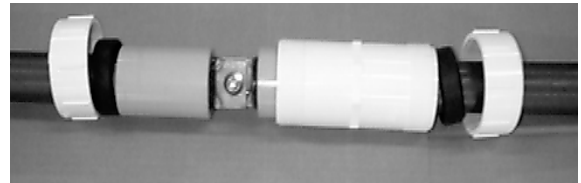


Figure 1

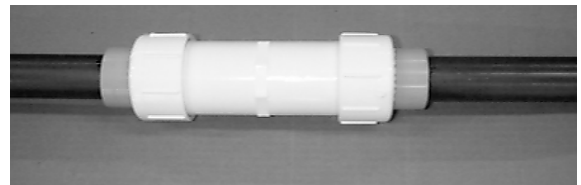


Figure 2

For more information see the original manual that came with the equipment or call UFSc at the phone number shown above.