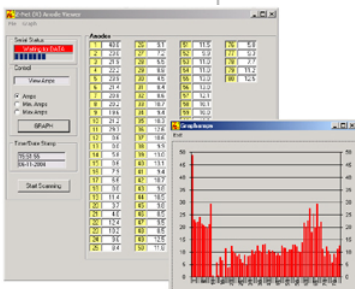


Current Monitor Plus

PRODUCT DATA SHEET

The Current Monitor Plus is designed to enhance, expand, and improve your original investment in a Current Monitor from UFS Corporation, or if you already have a current sensor for each ME Cell. It mounts next to the original and is designed to replace the need to activate individual switches to see the current flowing through each ME Cell. Even more powerfully, it can easily be delivered right to your PC via RS-232 protocol or via an optional Ethernet adapter.

The Current Monitor Plus is especially useful for hoist E-coat systems because it measures all the ME Cells in a fraction of a second rather than one Cell per load cycle (as with the original design).



Sample of software output

Features

- Standard units are available in the following sizes: 20, 30, 40, 50, 60, 70, & 80 position. Other sizes are available upon request.
- Built in multiples of 10. For example, a tank with 34 Cells would use the 40 position system, allowing for future increased capacity.
- NEMA 4x fiberglass enclosure box.
- Remote Panel can display 2 lines of text or 1 Cell at a time.
- Includes free software for PC (2000/XP) to display the results via RS232/RS485 connection.
- See reverse side for dimensional data.

Properties

- Uses the 100 amp (or 150 amp) 100 milli volt DC shunt already installed.
- 120 VAC 1 phase (1 Amp) power is required.
- Can perform a measurement every 500 ms (2 times a second).
- Output signals are protected by a high voltage isolation scheme.

Options

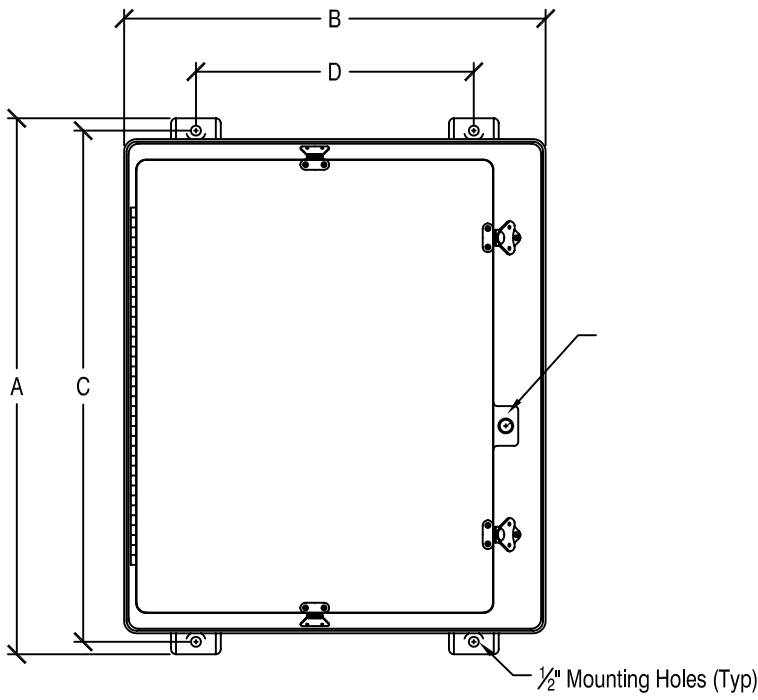
- MODBUS TCP – Ethernet.
- MODBUS RTU – Serial.



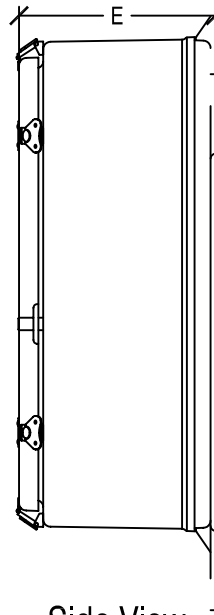
View of Remote Display Panel

UFS Corporation is the authorized sales and service distributor of JP Tech E-coat paint market products.

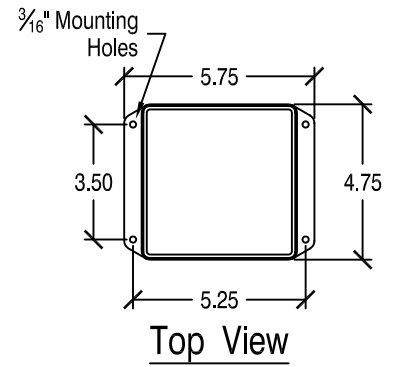
**UFS Corporation . 330 North 400 East . Valparaiso, Indiana 46383 USA
+219-464-2027 . +219-464-8646 (Fax) . www.ufsc.com . info@ufsc.com**



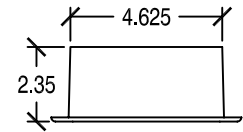
Front View



Side View



Top View

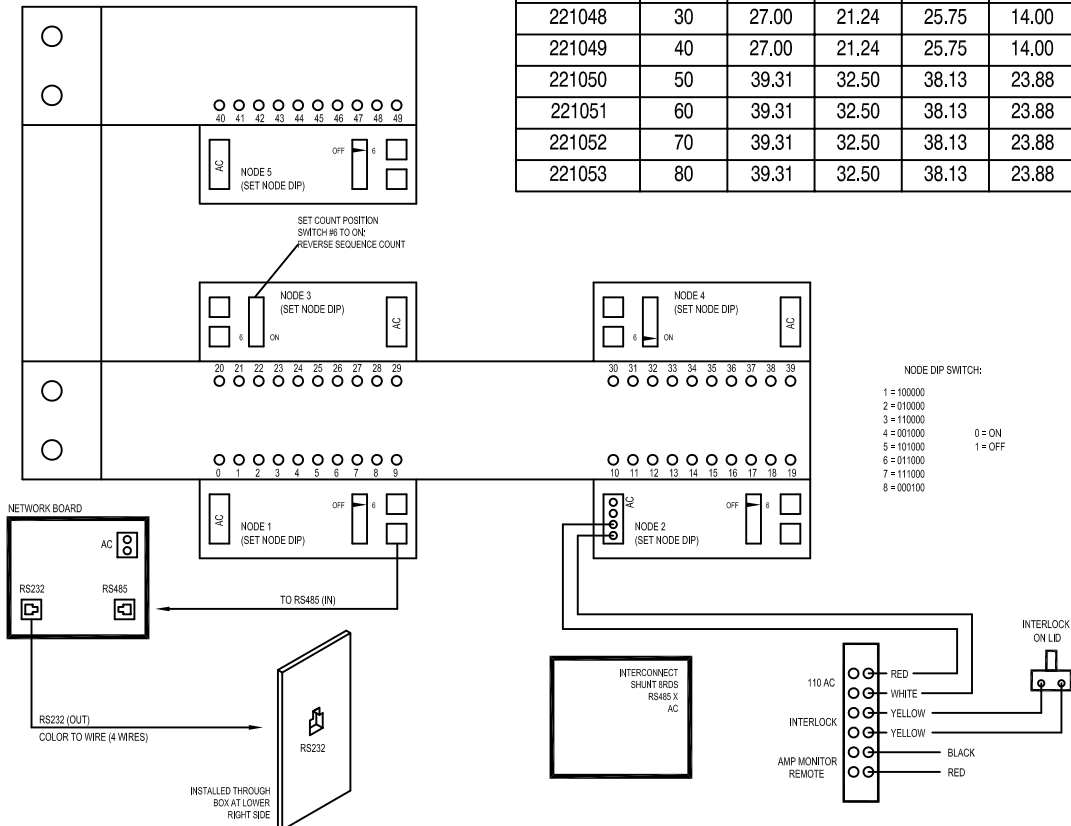


Front View

Anode Monitor Enclosure

Remote Panel

Dimensions						
UFS PN	# of Cells	A	B	C	D	E
221047	20	22.75	16.87	21.50	10.12	7.77
221048	30	27.00	21.24	25.75	14.00	9.90
221049	40	27.00	21.24	25.75	14.00	9.90
221050	50	39.31	32.50	38.13	23.88	10.05
221051	60	39.31	32.50	38.13	23.88	10.05
221052	70	39.31	32.50	38.13	23.88	10.05
221053	80	39.31	32.50	38.13	23.88	10.05



Typical Wiring Diagram