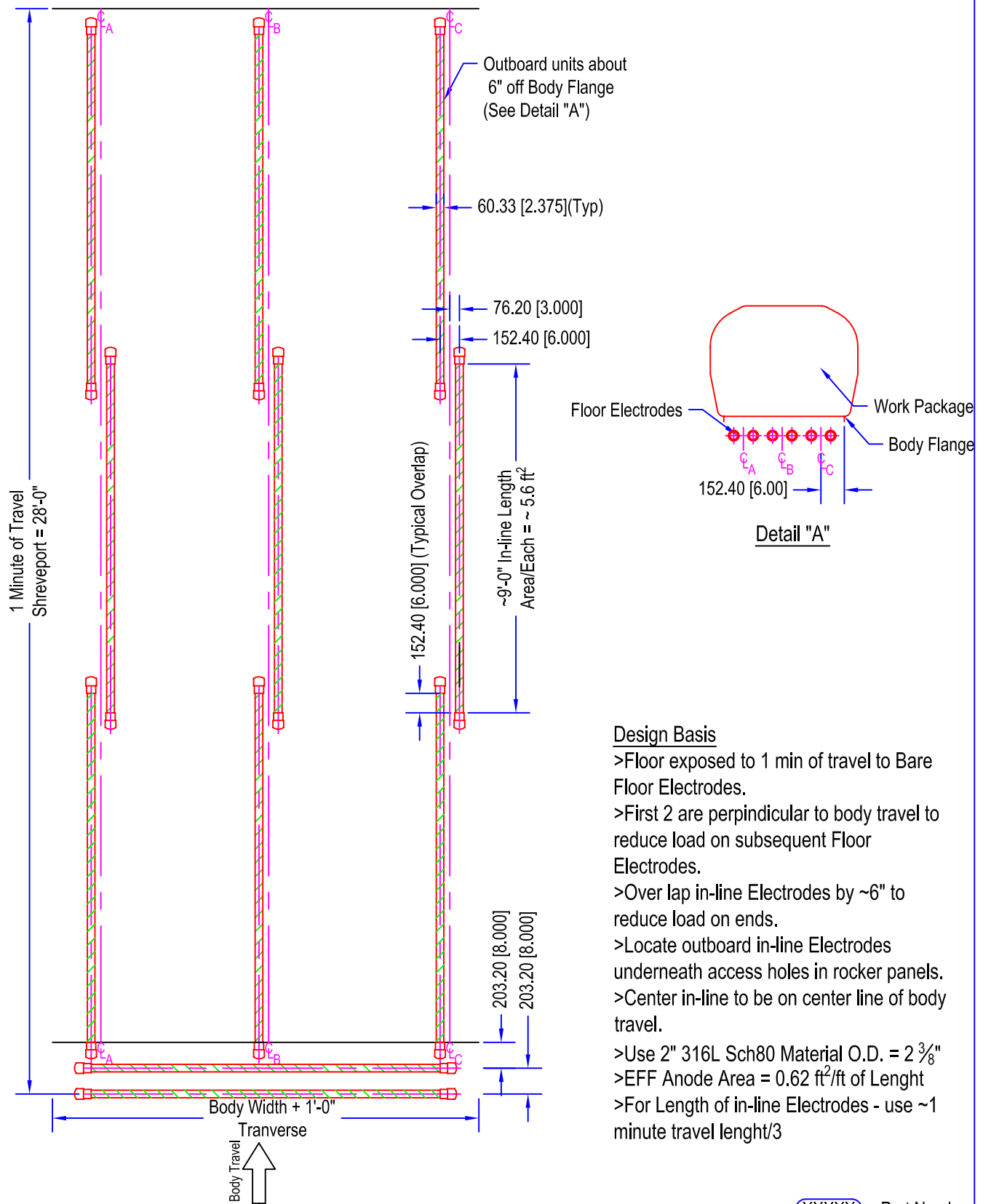


RevNo	REVISION	Date	Signature	Checked
2	Added Perpendicular Bare Floor Electrodes	5Oct00		



Design Basis

- >Floor exposed to 1 min of travel to Bare Floor Electrodes.
- >First 2 are perpendicular to body travel to reduce load on subsequent Floor Electrodes.
- >Over lap in-line Electrodes by ~6" to reduce load on ends.
- >Locate outboard in-line Electrodes underneath access holes in rocker panels.
- >Center in-line to be on center line of body travel.
- >Use 2" 316L Sch80 Material O.D. = 2 3/8"
- >EFF Anode Area = 0.62 ft²/ft of Length
- >For Length of in-line Electrodes - use ~1 minute travel length/3

XXXXXX = Part Number



Tel: +219-464-2027	Designed By:	JD
Fax: +219-464-8646	Date:	5Sep00
Visit us on the Web at www.ufsc.com	Approved By:	FH
	Date:	7Sep00

General Motors - ELPO	
Bare Floor Electrode Layout Template	
UFS Part No. 997179	Sheet: 1/1
	Revision: 2
	Units: mm[in]
	Scale: None

THIS MATERIAL IS THE CONFIDENTIAL PROPERTY OF UFS CORPORATION AND SHOULD NOT BE USED IN ANY WAY DETRIMENTAL TO THE CORPORATION'S INTEREST. MATERIAL SHOULD NOT BE COPIED OR REPRODUCED IN PART OR IN WHOLE, AND INFORMATION FROM IT SHALL NOT BE FURNISHED TO OTHERS WITHOUT WRITTEN PERMISSION. ALL RIGHTS OF DESIGN AND INVENTION ARE RESERVED BY UFS CORPORATION. MATERIAL TO BE RETURNED UPON REQUEST.