

Instructions

Date:

1. Please fill out sections A&B. After filling out sections A&B, please follow the instructions that apply to your circumstance.
2. If you are installing a new e-coat system, complete sections C&D also.
3. If you are retrofitting an existing e-coat system, please fill out sections C&D as applicable.
4. Please place a check mark in the unit of measure used to complete this form.
5. If you have any questions or require assistance, please contact Jeff Dickerson @ (219) 464-2027 ext. 14 or e-mail engineering@ufsc.com

Please select what unit of measure will be used throughout the form. Metric English

Customer Information

Company Name:

Company Address:

Telephone:

Fax:

System Contact:

E-mail:

Billing Address:

Telephone:

Fax:

Contact Person:

E-mail:

Customer Number:

Freight Co.:

[Continued](#)

UFS Corporation. . .dedicated to providing quality, innovative solutions to the electrocoating industry.

Topic: General/Tank/UF Information

Think and act in a safe manner. Always disconnect power and use a lockout before you work on the E-coat system, or any of the related subsystems. Observe any confined space conditions. Use the appropriate safety equipment and clothing for the task.

UFS Corporation
330 North 400 East
Valparaiso, IN 46383 USA

Phone: (219) 464-2027
Fax: (219) 464-8646
Email: engineering@ufsc.com



New Tank Retrofit

Section B - E-coat Tank Information

Tank Information

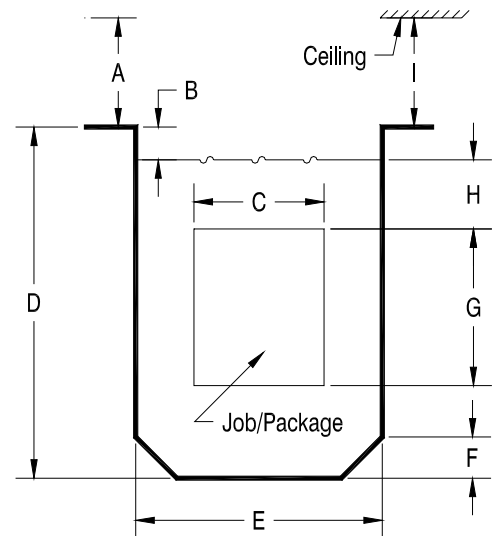
Tank Name: <input style="width: 90%;" type="text"/>	Build Date: <input style="width: 90%;" type="text"/>
Tank Manufacturer: <input style="width: 90%;" type="text"/>	Tank Lining: <input style="width: 90%;" type="text"/>
Immersion Time: <input style="width: 90%;" type="text"/>	Power On Time: <input style="width: 90%;" type="text"/>
Maximum Jobs/Hour: <input style="width: 90%;" type="text"/>	Operating Hours per Week: <input style="width: 20%;" type="text"/> Age: <input style="width: 20%;" type="text"/>
Maximum Area Painted per Job: <input style="width: 90%;" type="text"/>	Maximum Painted thru-put: <input style="width: 90%;" type="text"/>
Conveyor Type: <input type="checkbox"/> Monorail <input type="checkbox"/> Hoist Conveyor Speed (Maximum): <input style="width: 100px;" type="text"/>	
Hanger Type: <input style="width: 90%;" type="text"/>	Hanging Centers: <input style="width: 90%;" type="text"/>

Paint Information

Paint Supplier: <input style="width: 90%;" type="text"/>	Paint Type: <input type="checkbox"/> Anodic <input type="checkbox"/> Cathodic
Paint Color: <input style="width: 90%;" type="text"/>	Paint Formulation No.: <input style="width: 90%;" type="text"/>
Paint Bath Volume: <input style="width: 90%;" type="text"/>	Paint Bath Solids: <input style="width: 90%;" type="text"/>
Paint Bath pH: <input style="width: 90%;" type="text"/>	Paint Bath Conductivity: <input style="width: 90%;" type="text"/>
Paint Bath Temp: <input style="width: 90%;" type="text"/>	Target ED Film Thickness: <input style="width: 90%;" type="text"/>

Tank Dimensions

A	Interference:	<input style="width: 80%;" type="text"/>
B	Freeboard:	<input style="width: 80%;" type="text"/>
C	Job Width:	<input style="width: 80%;" type="text"/>
D	Tank Depth Min:	<input style="width: 80%;" type="text"/>
E	Tank Width Inside:	<input style="width: 80%;" type="text"/>
F	Bevel:	<input style="width: 80%;" type="text"/>
G	Job Height:	<input style="width: 80%;" type="text"/>
H	Submergence:	<input style="width: 80%;" type="text"/>
I	Ceiling Obstruction:	<input style="width: 80%;" type="text"/>



ED Tank Cross Section

Continued

UFS Corporation. . .dedicated to providing quality, innovative solutions to the electrocoating industry.

Topic: General/ Tank/ UF Information

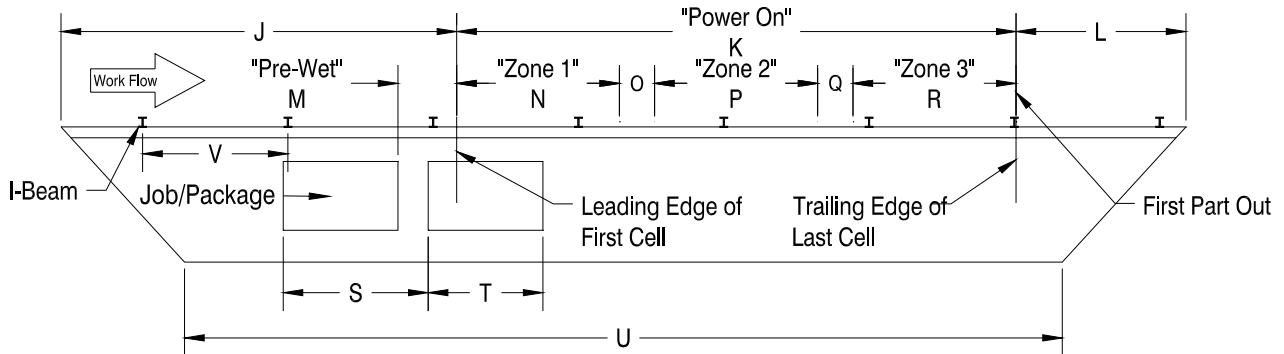
Think and act in a safe manner. Always disconnect power and use a lockout before you work on the E-coat system, or any of the related subsystems. Observe any confined space conditions. Use the appropriate safety equipment and clothing for the task.

UFS Corporation
330 North 400 East
Valparaiso, IN 46383 USA

Phone: (219) 464-2027
Fax: (219) 464-8646
Email: engineering@ufsc.com



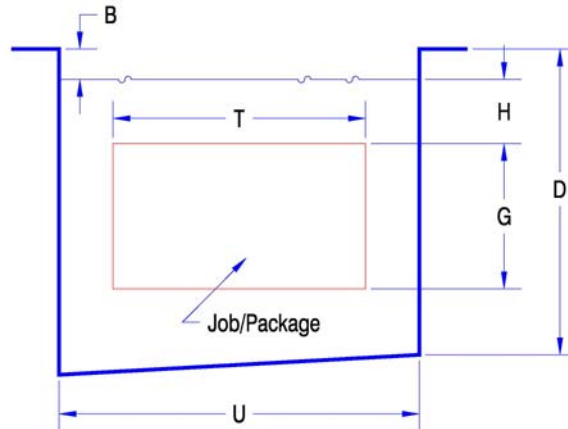
Tank Specifics (Cont. Section B)



Monorail Front View

J	Dimension:	<input style="width: 90%;" type="text"/>	Q	Gap 2-3:	<input style="width: 90%;" type="text"/>
K	Power On:	<input style="width: 90%;" type="text"/>	R	Zone 3:	<input style="width: 90%;" type="text"/>
L	Dimension	<input style="width: 90%;" type="text"/>	S	Job to Job:	<input style="width: 90%;" type="text"/>
M	Pre-Wet:	<input style="width: 90%;" type="text"/>	T	Job Length:	<input style="width: 90%;" type="text"/>
N	Zone 1:	<input style="width: 90%;" type="text"/>	U	Tank Length:	<input style="width: 90%;" type="text"/>
O	Gap 1-2:	<input style="width: 90%;" type="text"/>	V	I-Beam Spacing	<input style="width: 90%;" type="text"/>
P	Zone 2:	<input style="width: 90%;" type="text"/>			

NOTE:
Please see previous sheet to fill in for Dimensions "B", "D", "H" and "G"



Hoist/Dip Tank Front View

[Continued](#)

UFS Corporation. . .dedicated to providing quality, innovative solutions to the electrocoating industry.

Topic: General/Tank/UF Information

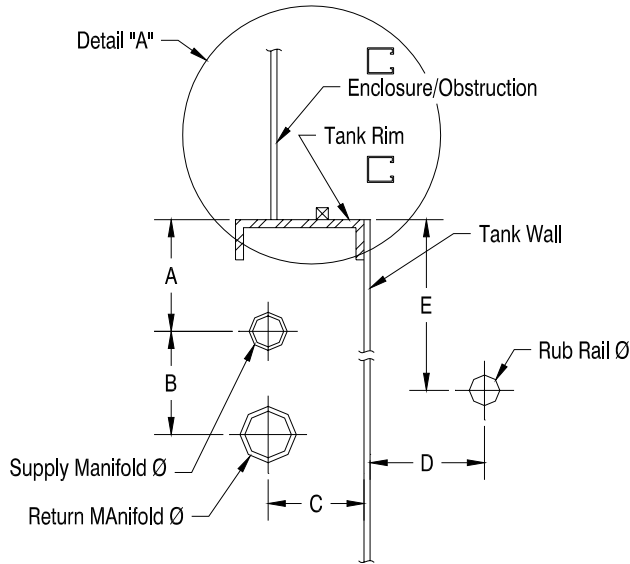
Think and act in a safe manner. Always disconnect power and use a lockout before you work on the E-coat system, or any of the related subsystems. Observe any confined space conditions. Use the appropriate safety equipment and clothing for the task.

UFS Corporation
330 North 400 East
Valparaiso, IN 46383 USA

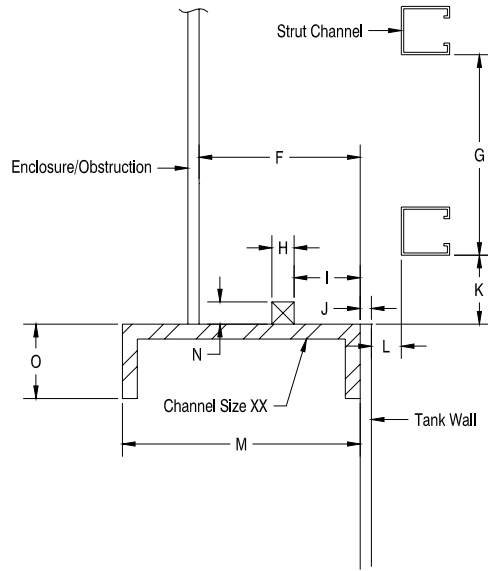
Phone: (219) 464-2027
Fax: (219) 464-8646
Email: engineering@ufsc.com



Tank Rim (Mounting) Dimensions



Tank Rim Detail



Detail "A"

A	<input type="text"/>
B	<input type="text"/>
C	<input type="text"/>
D	<input type="text"/>
E	<input type="text"/>
F	<input type="text"/>
G	<input type="text"/>
H	<input type="text"/>

I	<input type="text"/>
J	<input type="text"/>
K	<input type="text"/>
L	<input type="text"/>
M	<input type="text"/>
N	<input type="text"/>
O	<input type="text"/>

Supply Manifold Dia.	<input type="text"/>
Supply Manifold Material.	<input type="text"/>
Return Manifold Dia	<input type="text"/>
Return Manifold Material	<input type="text"/>
Tank Wall Thickness	<input type="text"/>
Rub Rail Dia.	<input type="text"/>
Channel Size	<input type="text"/>

Continued

UFS Corporation. . .dedicated to providing quality, innovative solutions to the electrocoating industry.

Topic: General/Tank/UF Information

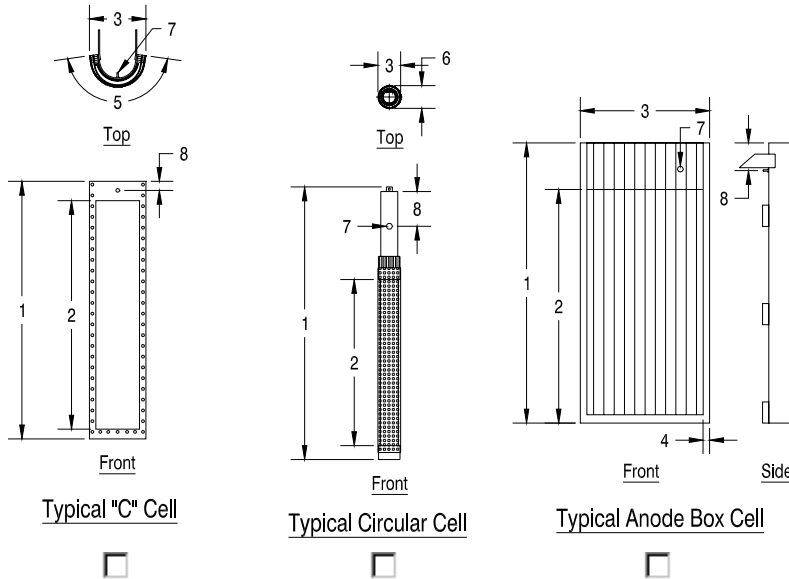
Think and act in a safe manner. Always disconnect power and use a lockout before you work on the E-coat system, or any of the related subsystems. Observe any confined space conditions. Use the appropriate safety equipment and clothing for the task.

UFS Corporation
330 North 400 East
Valparaiso, IN 46383 USA

Phone: (219) 464-2027
Fax: (219) 464-8646
Email: engineering@ufsc.com



Cell Configuration



- 1 Overall Height:
- 2 Submerged Height:
- 3 Overall Width:
- 4 Flange Width:
- 5 Electrode Arc Length:
- 6 OD of Tubular Electrode:
- 7 Overflow O.D.:
- 8 Overflow to top of Cell:

Manufacturer:

Date of last Rebuild

Electrolyte System Information

Tank Volume: <input type="text"/>	Tank Material: <input type="text"/>
Pump Manufacturer: <input type="text"/>	Pump Model #: <input type="text"/>
Pump Discharge Pressure: <input type="text"/>	Pump Flow Rate: <input type="text"/>
Conductivity Controller Mfg.: <input type="text"/>	Conductivity Control Model #: <input type="text"/>

Zone Information

	Single Zone	Zone 1	Zone 2	Zone 3
Highest Recorded Voltage (V):	<input type="text"/>	<input type="text"/>	<input type="text"/>	<input type="text"/>
Highest Recorded Amperes (A):	<input type="text"/>	<input type="text"/>	<input type="text"/>	<input type="text"/>
Number of ME Cells:	<input type="text"/>	<input type="text"/>	<input type="text"/>	<input type="text"/>
Typical Spacing Between Cells (mm/in):	<input type="text"/>	<input type="text"/>	<input type="text"/>	<input type="text"/>
Number of Bare Electrode Plates:	<input type="text"/>	<input type="text"/>	<input type="text"/>	<input type="text"/>

[Continued](#)

UFS Corporation. . .dedicated to providing quality, innovative solutions to the electrocoating industry.

Topic: General/Tank/UF Information

Think and act in a safe manner. Always disconnect power and use a lockout before you work on the E-coat system, or any of the related subsystems. Observe any confined space conditions. Use the appropriate safety equipment and clothing for the task.

UFS Corporation
330 North 400 East
Valparaiso, IN 46383 USA

Phone: (219) 464-2027
Fax: (219) 464-8646
Email: engineering@ufsc.com



Basic Ultra Filtration

Original Manufacture of UF System: Original UF Housing Model #:

Original UF Element Model #: Number of UF Element Needed (Qty):

Permeate Flow Required: Maximum Painted Thru-Put:

Max. Paint Flow Rate: UF Feed Pump Motor HP: Pre-Filter Size:

Pressure at UF Inlet (psi): Pressure at UF Outlet (psi):

Filter Type: Spiral Hollow Fiber Lip or Cup Permeate Seal Type: Male Female
 Tubular Plate in Frame Sanitary

Cleaning Pump Flow Rate: Cleaning Pump Pressure: Cleaning Tank Volume:

Cleaning System: Yes No CIP: Yes No Total System Cleaning Yes No

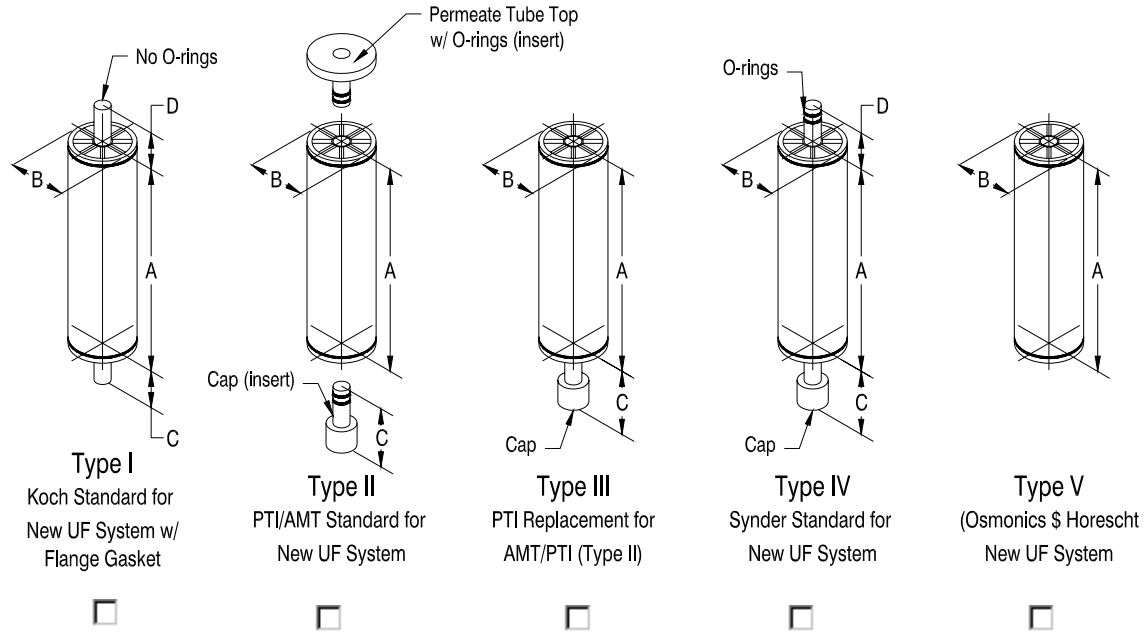
Is there a paint bypass on UF paint feed?: Yes No

Filter Bag Manufacture: Filter Bag Part Number: Bags per Vessel:

Number of Filter Vessels: Is there a paint bypass on bag filter paint feed?: Yes No

UF Element Configuration

Check Appropriate Element Your are Replacing.



UF Element Dimensions

A

B

C

D

[Continued](#)

UFS Corporation. . .dedicated to providing quality, innovative solutions to the electrocoating industry.

Topic: General/Tank/UF Information

Think and act in a safe manner. Always disconnect power and use a lockout before you work on the E-coat system, or any of the related subsystems. Observe any confined space conditions. Use the appropriate safety equipment and clothing for the task.

UFS Corporation
330 North 400 East
Valparaiso, IN 46383 USA

Phone: (219) 464-2027
Fax: (219) 464-8646
Email: engineering@ufsc.com



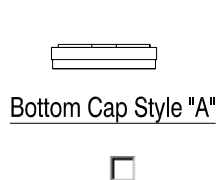
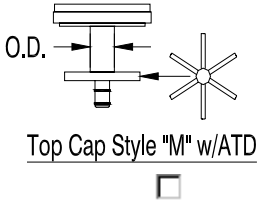
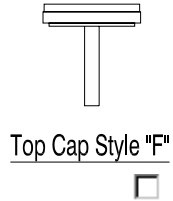
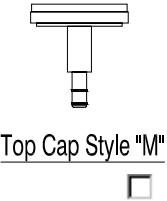
Element Housings

Type of Housing: Victaulic Top and Pinned Bottom Victaulic Top and Bottom Flanges Top and Bottom

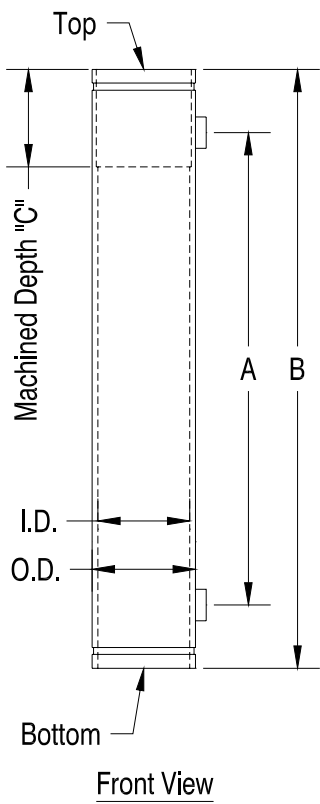
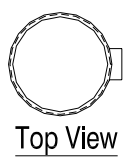
Size of Housing (Nominal): 8 inch 6 inch 4 inch

Top Cap Style: Material:

Bottom Cap Style: Material:



ATD O.D.



Please check the housing you are planning on replacing.

- PTI/AMT— Female to Female
- Synder—Male Top / Fixed Bottom
- Koch—Special Flange on Top End

A

B

C

I.D.

O.D.

Material:



UFS Corporation. . .dedicated to providing quality, innovative solutions to the electrocoating industry.

Topic: General/Tank/UF Information

Think and act in a safe manner. Always disconnect power and use a lockout before you work on the E-coat system, or any of the related subsystems. Observe any confined space conditions. Use the appropriate safety equipment and clothing for the task.

UFS Corporation
330 North 400 East
Valparaiso, IN 46383 USA

Phone: (219) 464-2027
Fax: (219) 464-8646
Email: engineering@ufsc.com

