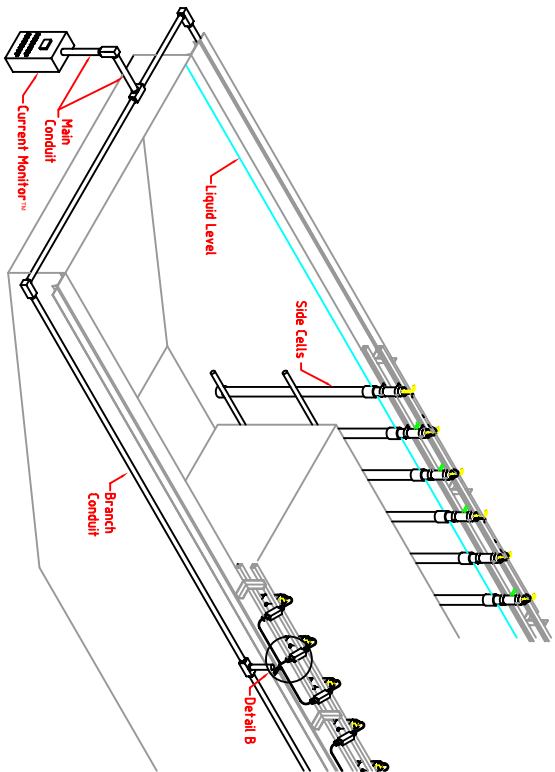
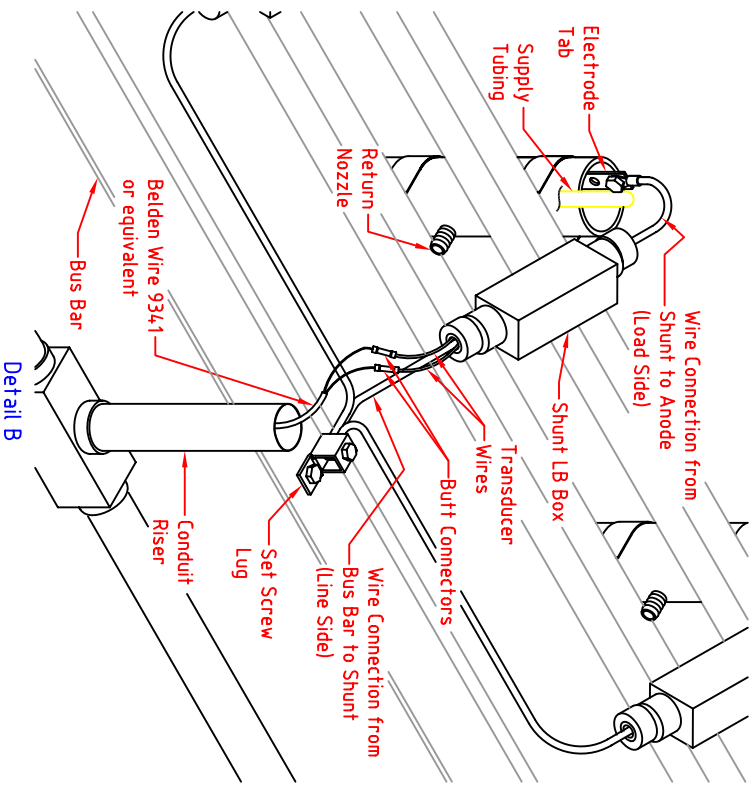


RevNo	Revision note	1	2	3	4	5	6	7	8
	Date				Signature	Checked			

Current Monitoring System - Estimated B.O.M. for Items Furnished by Others			
Description	Units	Qty.	Comments
A: Electrical [all items subject to all applicable Electrical Code(s)]			
Copper Bus Bar	Feet		Provide electrical supply to cells
5/16" x <u> </u> " Long Bolt & Nut	Set		Attach 225A Set Screw Lug to Bus
Conduit, hangers, etc.	Lot		Carry transducer wires from shunts to Current Monitor™ Panel



# of points	# of wires	Main Conduit Size (IN)	Branch Conduit Size (IN)
16	32	2"	1-1/4"
32	64	3"	2"
48	96	3"	2-1/2"
64	128	3-1/2"	2-1/2"

Note:

1. Consult your local (NEC) Electrical Code first before conducting any field wiring.
2. Use shielded Belden #18AWG TFFN wire part number 9341 or equivalent.
3. The minimum requirements for lengths of wire run: any wire less than #18AWG cannot exceed 24.3Meters (80') When attempting to use any wire runs more than 24.3Meters (80'), please contact UFS Corporation.

Designed By: JM	Date: 22Feb00	Approved By:	Date:	Units: m/in	Scale: None
		GA, Typical Installation, Current Monitor			
Tel: +219-464-2027 Fax: +219-464-8646 Visit us on the Web at www.ufsc.com		Membrane Electrode Cell			
UFS Part No. 997405		Edition 0		Sheet 1/1	
<small>THIS MATERIAL IS THE CONFIDENTIAL PROPERTY OF UFS CORPORATION AND SHOULD NOT BE USED IN ANY WAY REFERENTIAL TO THE CORPORATION'S INTEREST. MATERIAL SHOULD NOT BE COPIED OR REPRODUCED IN PART OR IN WHOLE, AND INFORMATION FROM IT SHALL NOT BE FURNISHED TO OTHERS WITHOUT WRITTEN PERMISSION. ALL RIGHTS OF DESIGN AND INVENTION ARE RESERVED BY UFS CORPORATION. MATERIAL TO BE RETURNED UPON REQUEST.</small>					