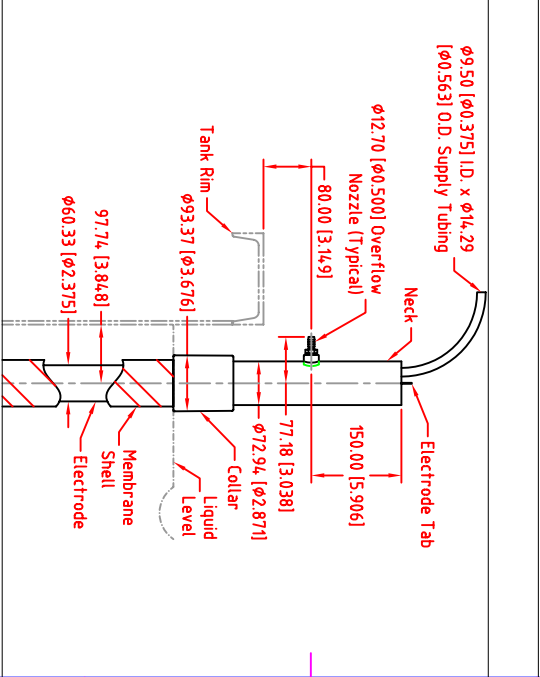
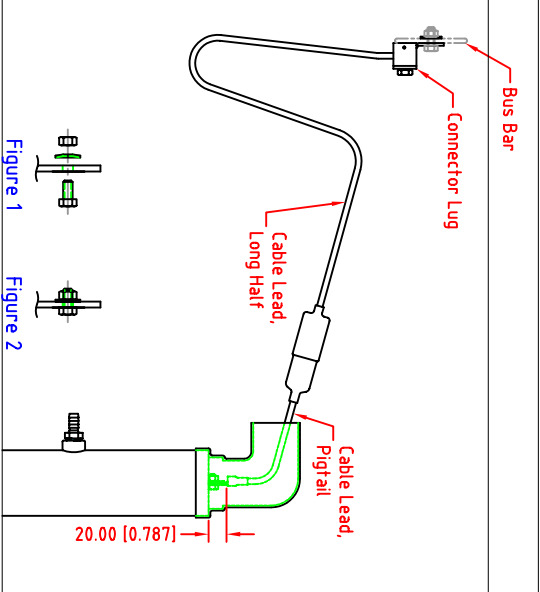
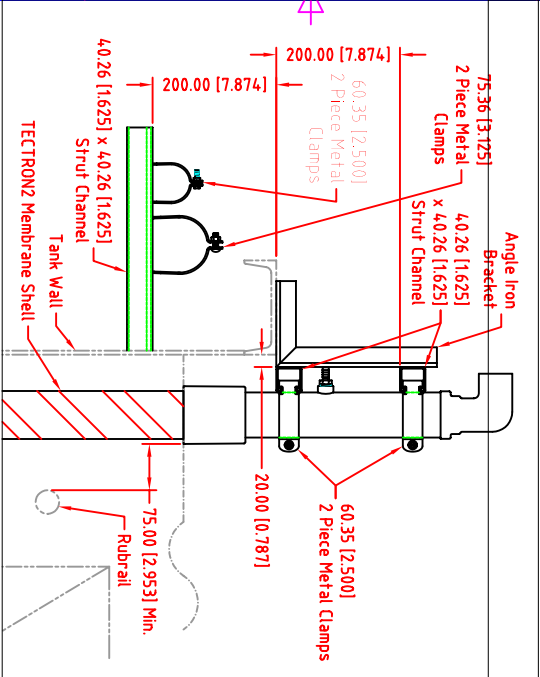
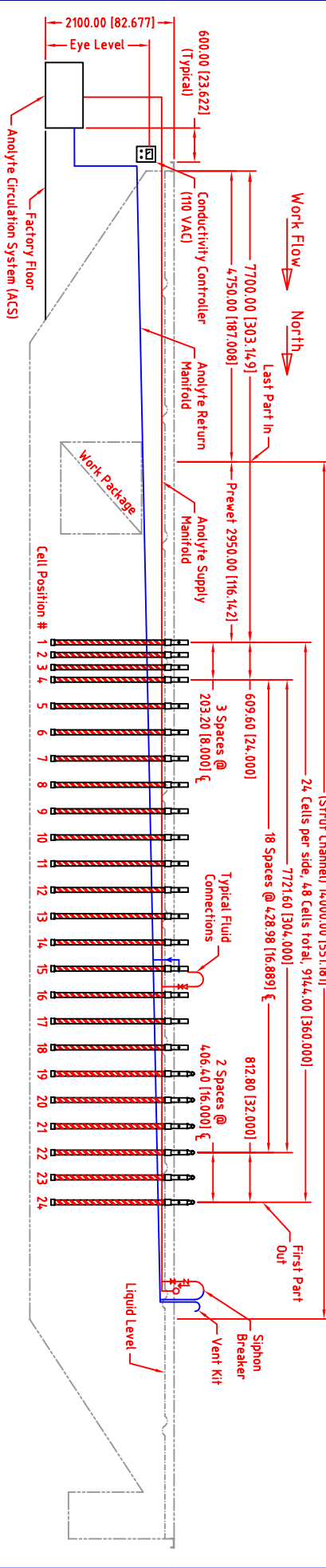


RevNo	Revision note	Date	Signature	Checked
1				
2				
3				
4				
5				
6				
7				
8				



- Support both horizontal & Sq. Strut Channels every 500.00 (59.055) with Angle Iron Brackets.
- Use Spahn Guards (or least 6 Cells on each side (minimum).
- Support Siphon Breaker and Vent Kit to stir.
- Support Siphon Breaker 6.35 (1.625) per foot of run. Support both headside every 500.00 (59.055).
- Use spacers between Mem. and Strut Channels as required for Cells to hang vertical.
- Align center of Cells with appropriate hole in Supply and Return Manifolds, but maintain 75.00 (2.953) clearance to keep Membrane Shell from rubbing on object.
- Use only two piece clamps to secure Cell to Strut Channel.
- Secure Analyte Tank to floor using SS clips that slip into feet of ACS Tank and anchor to floor with 8.00 (0.438) Lag Bolt.
- Install Cells only after tank is cleaned, but prior to filling with DI water and/or paint. Open Membrane Shell packaging to expose tank and attach to Strut Channel with 2 clamps. Remove packaging after all Cells have been installed.

- Cable Leads are typically 5000.00 (59.055) or longer if so requested. Trim unfinished Cable Lead, Long Half, leaving about 300.00 (11.811) slack and strip insulation. Fasten up to five leads into each S&F Screw Lug.
- Use 7/8" (0.375) Bolt and Nut to attach Connector Lug to Bus Bar.
- Use 1/2" x 6" (1.27) x 1/2" (1.27) Washer and Nut to attach Connector Lug to Bus Bar. Insulations to engage.
- Tighten nut until compression washer goes flat on both Electrode Tab and Bus Bar connections (figure 1 & 2). Use only stainless steel hardware.
- Ground ACS Tank per local code using 3/8"-6 stud on lower corner of tank.
- Install a 3 phase motor starter (not supplied by UFS) and disconnect sized for the horsepower of item. Use only stainless steel hardware.
- DO NOT Plug Electrodes into Membrane Shell, lower slowly, and disconnect sized for the horsepower of item. Use only stainless steel hardware.
- DO NOT Plug Electrodes into Membrane Shell, lower slowly, and disconnect sized for the horsepower of item. Use only stainless steel hardware. attached from the factory.

All Views are Typical

Designed By: JS Date: 9Feb99 Approved By: Date: _____

Tel: +219-464-2027

Fax: +219-464-8646

Visit us on the Web at www.ufsc.com

UFS Part No. 997160 Edition 0 Sheet 1/2

Units: mm(in) Scale: None

StDdwg, GA, TypInstl, Monorail

HD Membrane Electrode Cell

Electrodeing Equipment

THIS MATERIAL IS THE CONFIDENTIAL PROPERTY OF UFS CORPORATION AND SHOULD NOT BE USED IN ANY WAY OR REPRODUCED IN ANY MANNER WITHOUT THE WRITTEN PERMISSION OF UFS CORPORATION. ALL RIGHTS OF DESIGN AND INVENTION ARE RESERVED BY UFS CORPORATION. MATERIAL TO BE RETURNED UPON REQUEST.